

New QEII Hospital

Welwyn Garden City

The New QEII Hospital is amongst the first of a new generation of NHS Local Hospitals integrating primary, acute and social care services to serve the local population. It replaces the existing 1950s QEII Hospital – one of the first purpose built NHS District Hospitals – which had reached end of its useful life.

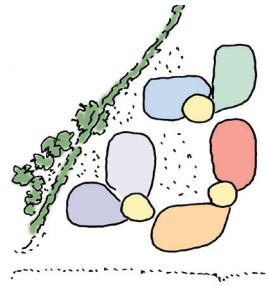
The site is located on the existing QEII Hospital site on the southern edge of Welwyn Garden City, a predominantly residential zone built in the post war expansion of the City, conceived and established in the 1930s by the Garden City pioneer Ebenezer Howard.

To ensure continuity of healthcare services during the construction of the New QEII, Penoyre & Prasad also developed an overall site masterplan and phasing plan for the whole QEII site - to create a development site for the new Local Hospital with associated car parking and a strategy for the remaining site after the demolition of the redundant buildings. The site constraints and masterplanning results in the location for the New QEII at the entrance to the main site and therefore in the most visible and public part of the site. This was a key opportunity to give the New QEII a 'civic' presence within the predominantly residential location and the landmark building in a new healthcare 'campus' incorporating a future Care Home and the existing Isabel Hospice.

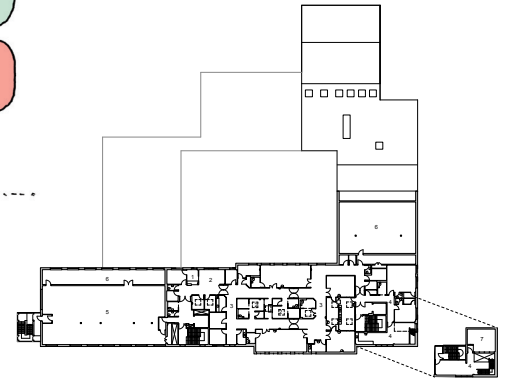
Patient and public engagement has been a significant part of the work that was undertaken to deliver both this £30m facility and the £150m investment to concentrate specialist acute services at the 'sister' site, the Lister Hospital, Stevenage. The New QEII Hospital was procured under the NHS LIFT procurement process, a Public Private Partnership with contractual arrangements to enable services to change as health service provision changes over the 25-year period of the LIFT company operation.

To meet the demands of an ever-changing Healthcare service, the design approach incorporates clinical layouts and generic spaces to enable flexibility of use on a day-to-day basis and also adaptability to future service changes. The Local Hospital concept provides many of the clinical services and facilities of a larger district hospital, but locates them closer to the community they serve, reducing the load on the acute hospitals and improving the accessibility to healthcare services.

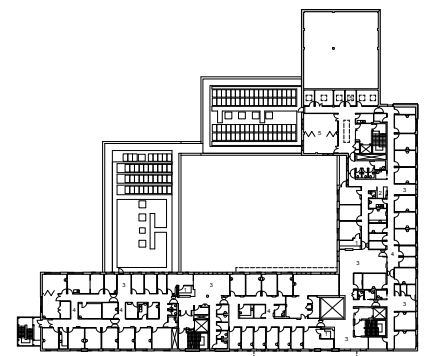
The New QEII accommodates a 24/7 Urgent Care Centre and a large Diagnostic Imaging department including MRI, CT, X-Ray and Ultrasound, all located on the ground floor. The whole of the first floor accommodates an extensive Outpatients department delivering many of the existing clinical services on the QEII site. Other key clinical services include; Ambulatory



3rd floor



2nd floor



1st floor



Ground floor



Care, Medical Day Treatment, Integrated Children's services, Therapies, Breast Clinic and an Endoscopy suite. There are also community bookable spaces, a café and a dedicated Pharmacy.

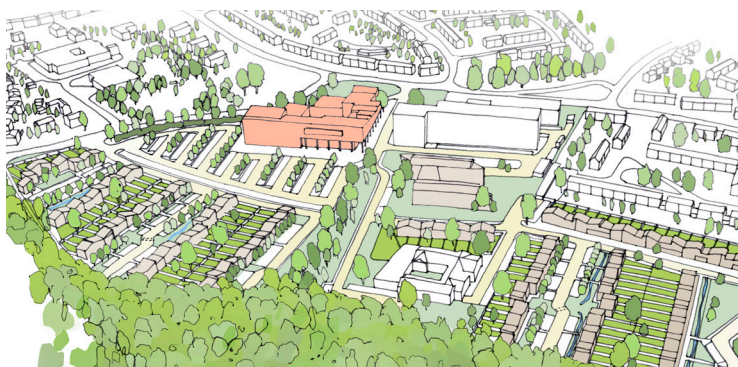
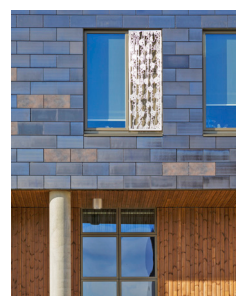
The building is formed of three 'L' shaped wings defining a central courtyard around which the main public circulation is arranged. The 'L' shapes also create smaller, more private and less formal gardens at the edge against an existing mature hedgerow to the northern boundary of the site. The 'L' shaped wings are sized to accommodate a department or sub-department, but can flexibly connect and interlink both horizontally and vertically. Each contains a vertical circulation core and waiting zone at the corner of the 'L', ensuring that patients wait close to the point of their treatment or consultation.

Externally, arrival to the main entrance of the New QEII hospital is from two directions – from the car park to the south or by public transport or by foot from Howlands, to the north. These two routes to the main entrance are connected by a generous, double height, timber lined colonnade, which both protects and leads visitors to the entrance hall. The triple height main entrance space, with a vibrant mural by artist David Tremlett is light and open, connecting the internal spaces, the colonnade and the landscaped courtyard. The central reception is located here, close to the entrance and on the main circulation routes around the courtyard and the public facilities – the café, pharmacy, community support facilities and information services are also located around the entrance space. Highly visible colour theming, based on the Tremlett mural, is used on walls, signage and flooring, and leads to department receptions and sub-waiting zones arranged around the courtyard. These are visually and spatially linked by internal open voids allowing good daylight throughout, external views and legibility for way-finding.

The scale of the New QEII respects the surrounding context whilst also creating a distinctive presence appropriate for its function as an important public building. The building form of undulating pitched roofs rising from 2 storeys to 4 storeys acknowledges the arts and crafts roots of Welwyn Garden City which is reinforced by the main elevations which are clad in hand glazed porcelain tiles. These tiled facades are lifted up above the timber-lined colonnade to allow the generously glazed facades to spatially link the urban public realm to the landscaped courtyard within.

The windows have been carefully designed for daylight and natural ventilation suitable for a clinical care setting, generally incorporating a large fixed glass pane and an insulated shutter divided in two parts, one for manual control and one for automatic operation for ventilation. The shutter openings have stainless steel screens inspired by local influences and individually designed by the artist Charlotte Mann to integrate artwork into the building fabric as part of a Public Art programme.

Following a design competition in early 2010, the design and planning stage progressed with initial site works starting in 2012, construction of the new building started in April 2013 and completed 24 months later in 2015 and was fully operational in Sept 2015.



Project team

| | |
|---------------------|---------------------------------------------------------|
| Client | East & North Hertfordshire Clinical Commissioning Group |
| Owner | Assemble Community Partnership Ltd |
| Architect | Penoyre & Prasad |
| Project Manager/QS | Tropus Spicer |
| Main Contractor | Balfour Beatty |
| M&E Engineer | Building Services Design |
| Structural Engineer | Aecom/URS Corporation |
| Art Consultant | Art in Site |
| Landscape | Macfarlane Associates |